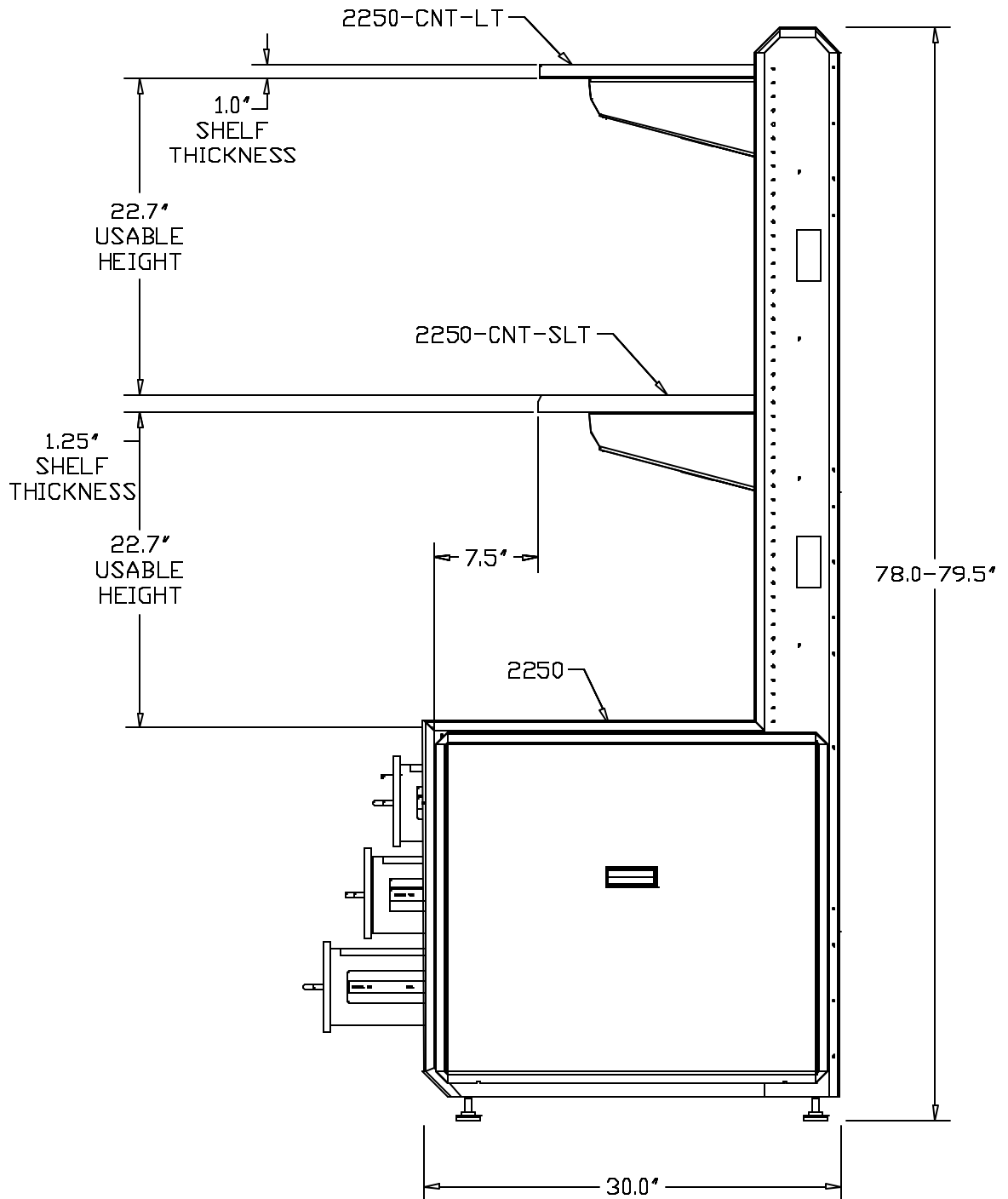


SIDE VIEW



NOTE:

- 1) SHELF HEIGHTS ARE VARIABLE IN 1" INCREMENTS.
- 2) 2250-CNT-SLT SHELF CAN BE ANGLED AT 15 DEGREES OR MOUNTED HORIZONTALLY.
- 3) THERE IS 7.5" OF USABLE DEPTH FROM THE FRONT OF THE 2250 TO THE FRONT OF THE 2250-CNT-SLT AND THE 2250-CNT-LT.
- 4) THE HEIGHT OF THE CABINET WITH OPTIONAL CASTERS IS 80.8".

CUSTOMER#	QTY PER UNIT:	DRAWN BY: MIKE	REV. DATE: 5-30-00		Great Lakes Case & Cabinet Co. P.O. Box 551 / Edinboro, PA 16412 PHONE: (814) 724-7296 FAX: (814) 724-3987 EMAIL: glcase@glcase.com
SCALE: N.T.S.	MATERIAL:	ISSUE DATE: 3-15-00	PART DESCRIPTION: ADVANTAGE 2000+ OPEN ARCHITECTURE WORK STATION		REV. 1
TOLERANCES ON DIMENSIONS UNLESS OTHERWISE SPECIFIED: DECIMAL .00X ± .010 .XX ± .015 .X ± .020 ANGULAR ± 1/2° DIMENSIONS IN INCHES DO NOT SCALE		DESIGN CHG#	SHEET: 2A OF 6		